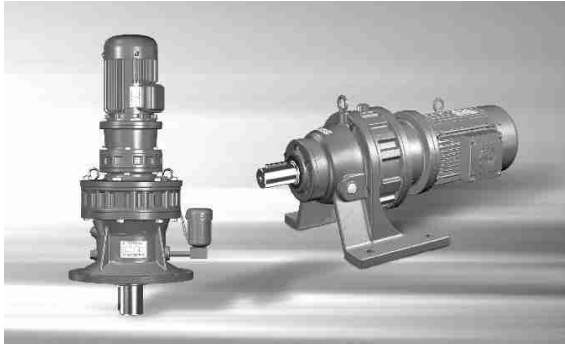




X系列



X系列摆线针轮减速机 X Series Cycloid Pin Wheel Reductor

摆线针轮减速机的特点 Features of Cycloid Pin Wheel Reductor:

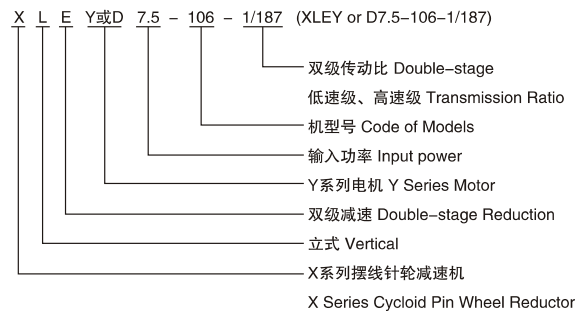
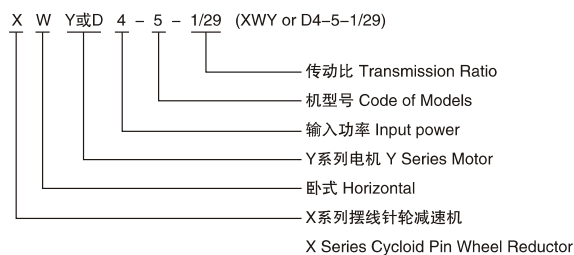
- 高度比和高效率。
Hight Ratio and High Efficiency.
- 单级减速, 就能达到1:87的减速比, 效率在90%以上, 如果采用多级减速, 减速比更大。
Single-stage reduction boosts the reduction ratio up to 1:87 with efficiency over 90% and reduction ratio will be getting higher, if multi-stge reduction is employed.
- 结构紧凑体积小。
Cojmpact and Structure.
- 由于采用了行星传动原理, 输入轴与输出轴在同一轴心上, 使其机型获得尽可能小的尺寸。
Adopting the principle of planetary transmission that puts inut and output shafts on same axis, the model can get the smallest size possible.
- 运转平稳噪声低。
Operating Smoothly with Low Noise.
- 摆线针齿啮合齿数较多, 重叠系数大以及具有机件平衡的机理, 使振动和噪声限制在最小程度。
There are a lot of teeth on cycloid pin wheels that help to control vibration and noise to minimum by the mechanism of high overlap coefficient and capability of equilibrizing machine parts.
- 使用可靠、寿命长。
Dependable Durability and Long Life-span.
- 因主要零件是高碳铬钢经淬火处理(HRc58-62)且运转接触采用了滚动摩擦, 基本上无磨损, 所以经久耐用寿命长。
There is hardly any abrasion for high-carbon chromium steel-made main parts that are quenched (Hrc58-62) and employs sliding abrasion, so the machine enjoys high durabilyt and long life-span.
- 设计合理, 维修方便, 容易分解安装, 最少零件个数以及简单的润滑。
Being reasonably devised, handy to maintain andeasy to disassemble and mount with decreased quantity of parts and simple lubrication actions.

X

行星摆线针轮减速机型号及表示方法 Models and Expressions of Planetary Cycloid Pin Wheel Reducers:

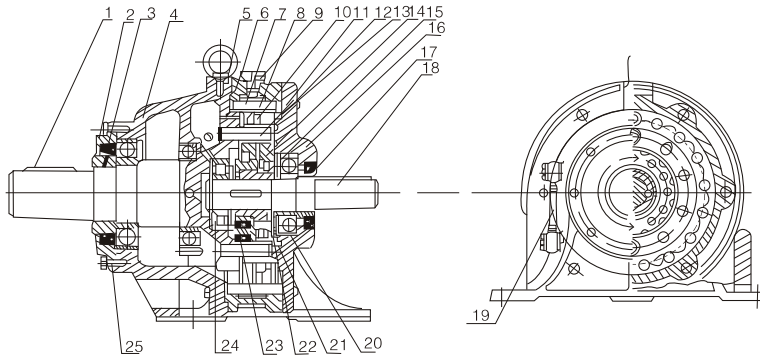
- X-行星摆线针轮减速机 X-Planetary Cycloid Pin Wheel Reductor
- W-卧式 W-Horizontal
- L-立式 L-Vertical
- D或Y-Y系列电机 D or Y-Y Series Motor
- E-双级减速 E-Double-Stage Reduction

型号表示法 Reprsen tation for type





结构示意图 Structure Diagram



- 1. 输出轴 Output Shaft
- 2. 压盖 Gland
- 3. 紧固环 Securing ring
- 4. 机座 Base Frame
- 5. 纸垫 Paper Mat
- 6. 针齿壳 Pin Wheel Inclosure
- 7. 针齿肖 Pin Wheel Bolt
- 8. 针齿套 Pin Wheel Housing
- 9. 通气帽 Ventilation Cap
- 10. 间隔环 Spacer Ring
- 11. 肖轴 Shaft Pivot
- 12. 肖套 Shaft Housing
- 13. 纸垫 Paper Mat
- 14. 摆线轮 Cycloid Wheel
- 15. 偏心套 Eccentric Housing
- 16. 法兰盆 Flange Dish
- 17. 紧固环 Securing Ring
- 18. 输入轴 Input Shaft
- 19. 示油器 Oil Indicator
- 20. 挡圈 Cirelip
- 21. 孔用弹性挡圈 Circlip for Holes
- 22. 挡圈 Retainer
- 23. 挡圈 Retainer
- 24. 轴用弹性挡圈 Circlip for Shafts
- 25. 轴用弹性挡圈 Circlip for Shafts

型号结构示意图 Model Structure Diagram

1. 本机为定转矩设计：表3、表4已有各机型输出轴许用扭矩，选用时，实际工作转矩应≤本机额定转矩，最大瞬时负荷或起动负荷应≤本机额定负荷的160%。
Constant torque design is used in this model: in Table 3 and Table 4 allowed torques of output shaft for all models are all marked out. While choosing among them, actual operating torque shall be equal to or less than rating torque of the model and maximum instant load or startup load shall be equal to or less than 160% of rating load for the model
2. 如果输入转速是变化的，应根据使用条件，若要求功率一定，按最低转速需功率选取，若要求扭矩一定，则按高转速时所需的功率选取。
If input rotation speed is variable, it should be chosen based on required operation conditions. If required power is decided, the minimum rotation speed power shall be chosen; if required torque is decided then the maximum rotation speed power shall be chosen.

注意：本机的温升不得超过60°C（即工作温度减去环境温度等于温升）
Notes: the temperature rise of machine body shall be lower than 60°C (i.e. Subtracting room)

工况系数K Coefficient of Operating Conditions

原动机种类 Type of Prime	工作条件 Operating conditions	负荷性质 Property of Load		
		稳定 Smooth	中等冲击 Medium Impact	大的冲击 Huge Impact
电动机 Electromotor	断续，3小时/天 Intermittent, 3 hr per day	0.8	1.0	1.35
	8~10小时/天 8~10 hr per day	1.0	1.2	1.5
	24小时/天 24 hr per day	1.2	1.35	1.6

注：原动机为多缸发动机时，根据表中的工作条件与负荷性质，可选取K=1.0~1.7原动机为单缸发动机时K=1.2~1.8。
Notes: While prime mover is a motor with several cylinders, K=1.0~1.7 shall be chosen based on operating conditions and K=1.2~1.8 for single-cylinder motors.

各系列单级机型对照表 Comparison Table of All Single-stage Models

-表1- (Table 1)

系列 Series	机型 Model									
X	X2	X3	X4	X5	X6	X7	X8	X9	X10	
BJ	BJ2	BJ3	BJ4	BJ5	BJ6	BJ7	BJ8	BJ9	BJ10	
B		B1	B2	B3	B4		B5	B6		
一机部标准B Standard B of First Machinery Industry Department		B15	B18	B22	B27		B33	B39	B45	

各系列双级机型对照表 Comparison Table of All Double-stage Models

-表2- (Table 2)

系列 Series	机型 Model								配置动力源 Power Source Equipped	代号 Code	配置动力源 Power Source Equipped	代号 Code
X	X42	X53	X63	X74	X84	X85	X95	X106	Y系列电机 Y Series Motor	Y	调速电机 Speed-regulating Motor	T
BJ	BJ42	BJ53	BJ63	BJ74	BJ84	BJ85	BJ95	BJ106	防爆型电机 Explosion-proof Motor	B	油马达 Oil Motor	M
B		B31	B41		B52	B53	B63		直流电机 Continuous Current Motor	Z	制动电机 Brake Motor	X
一机部标准B Standard B of First Machinery Industry Department		B2215	B2715		B3318	B3322	B3922	B4527				



单级X系列摆线针轮行星减速机型号规格 Model Specifications of Single-stage X Series Cycloid Pin Wheel Planetary Reductor c

-表3-(Table 3)

型 式 (Type)			电 机 (Motor)		减 速 比 (Reduction Ratio)										低速轴 许用扭矩 (Allowed Torque of Low-speed Shaft)
卧式带电机 Horizontal with Motor	立式带电机 Vertical with Motor	双轴型卧式 Horizontal Double-shaft	K W	同步转速 Synchronizing Rotation Speed	11	17	23	29	35	43	59	71	87		
XWD0.55-2 XWD0.55-3	XLD0.55-2 XLD0.55-3	XW-2 XW-3	0.55	1500	○	○	○	○	○	○	×	×	×	150 250	
XWD0.75-2 XWD0.75-3 XWD0.75-4	XLD0.75-2 XLD0.75-3 XLD0.75-4	XW-2 XW-3 XW-4	0.75	1500	○	○	○	○	○	○	×	×	×	150 250 500	
XWD1.1-3 XWD1.1-4	XLD1.1-3 XLD1.1-4	XW-3 XW-4	1.1	1500			○	○	○				×	250 500	
XWD1.5-3 XWD1.5-4 XWD1.5-5	XLD1.5-3 XLD1.5-4 XLD1.5-5	XW-3 XW-4 XW-5	1.5	1500	○	○	○	○	○	○		○	○	250 500 1000	
XWD2.2-4 XWD2.2-5 XWD2.2-6	XLD2.2-4 XLD2.2-5 XLD2.2-6	XW-4 XW-5 XW-6	2.2	1500			○	○	○	○	○	○	○	500 1000 2000	
XWD3-4 XWD3-5 XWD3-6	XLD3-4 XLD3-5 XLD3-6	XW-4 XW-5 XW-6	3	1500		○	○	○	○	○				500 1000 2000	
XWD4-4 XWD4-5 XWD4-6 XWD4-7	XLD4-4 XLD4-5 XLD4-6 XLD4-7	XW-4 XW-5 XW-6 XW-7	4	1500	○	○	○	○	○	○	○	○	○	500 1000 2000 2700	
XWD5.5-5 XWD5.5-6 XWD5.5-7	XLD5.5-5 XLD5.5-6 XLD5.5-7	XW-5 XW-6 XW-7	5.5	1500		○	○	○	○	○	○	○	○	1000 2000 2700	
XWD7.5-5 XWD7.5-6 XWD7.5-7 XWD7.5-8	XLD7.5-5 XLD7.5-6 XLD7.5-7 XLD7.5-8	XW-5 XW-6 XW-7 XW-8	7.5	1500	○	○	○	○	○	○	○	○	○	1000 2000 2700 4500	
XWD11-6 XWD11-7 XWD11-8 XWD11-9	XLD11-6 XLD11-7 XLD11-8 XLD11-9	XW-6 XW-7 XW-8 XW-9	11	1500		○	○	○	○	○	○	○	○	2000 2700 4500 9000	
XWD15-8 XWD15-9 XWD15-10	XLD15-8 XLD15-9 XLD15-10	XW-8 XW-9 XW-10	15	1500	×			○	○	○		○	○	4500 9000 12000	
XWD18.5-8 XWD18.5-9 XWD18.5-10	XLD18.5-8 XLD18.5-9 XLD18.5-10	XW-8 XW-9 XW-10	18.5	1500	×	○	○	○	○			○	○	4500 9000 12000	
XWD22-9 XWD22-10	XLD22-9 XLD22-10	XW-9 XW-10	22	1500	×		○	○	○	○		○		9000 12000	
电机为4级时输出轴转速 (转/分) Rotation Speed of Output Shaft while Motor on 4 Grade(rotations per minute)					134	88	65	51	43	35	25	21	17		
电机为6级时输出轴转速 (转/分) Rotation Speed of Output Shaft while Motor on 6 Grade(rotations per minute)					×	59	43	35	29	23	17	14	11		

说明：“○”者为已生产的标准型产品；“×”者为不生产；无标志处理选用。
Instruction: Models marked with "○" are standard products produced; models marked with "×" are not in production.



-表4-(Table 4)

双级X系列摆线针轮行星减速机型号规格 Model Specifications of Double-stage X Series Cycloid Pin Planetary Reductor

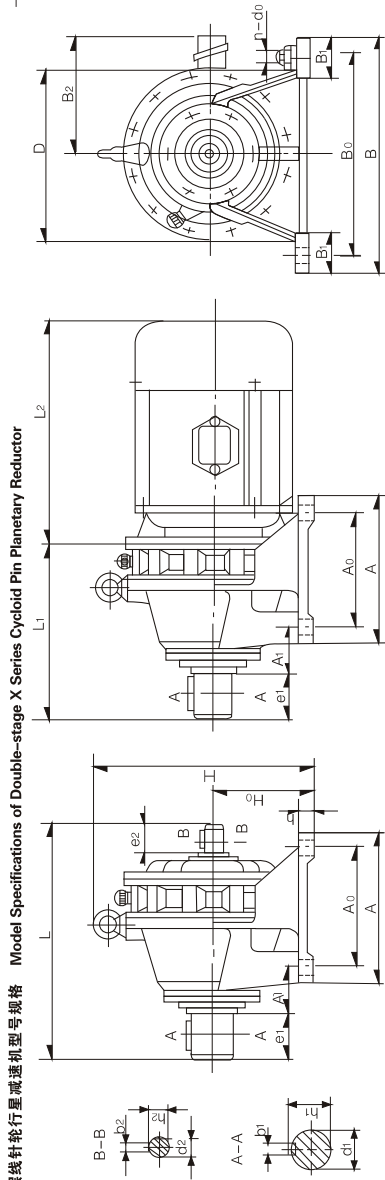
Table with columns: Motor Type (立式带电机, 卧式双轴型, 立式双轴型), Motor Power (KW), Motor Speed (同步转速), Output Torque (许用扭矩), and Output Speed (121 to 12.4 rpm).

说明: "O" 者为已生产的标准型产品; "x" 者为不生产; 无标志处理选用。 Instruction: Models marked with "O" are standard products produced; models marked with "x" are not in production.

其使用条件说明如下: 1. "●" 可以使用电机的全容量。但使用有制动力矩电机时, 由于起停时频繁及制动转矩产生过负荷, 应该选用 "O"。 2. "△" 应在输出轴扭矩 (N·m) 范围内使用, 使用时应在输出轴上安全装置, 以防止减速机过大的力矩。 Means operation shall be limited within the torque (N·m) output shaft requires with safety device mounted on output shaft to avoid too much force moment exerting to reductor.



-表4-(Table 4)



双级X系列摆线针轮行星减速机型号规格 Model Specifications of Double-stage X Series Cycloid Pin Planetary Reductor

XWY (XW) 型单级减速机外型及安装尺寸 Appearance and Mounting Dimensions of XWY(XW) Single-stage Reductor

系列 机型号 Series and Model	安 装 尺 寸 (Mounting Dimensions)				轴 伸 接 尺 寸 Output Shaft				轴 入 轴 Input Shaft				外 型 尺 寸 Dimensions										
	A ₁	A ₀	B ₁	B ₀	A	A ₀	A ₁	A ₂	d ₁	d ₂	d ₃	d ₄	e ₁	e ₂	H	B	D	A	L	L ₁	L ₂	B ₂	
X2	67	90	45	180	15	4	M10	25	8	28.2	34	15	5	17.1	25	175	210	150	120	214	159		
X3	96	100	55	250	20	4	M14	35	10	38	55	18	6	20.58	35	240	290	215	150	266	192		
X4	150	145	65	290	22	4	M14	45	14	48.5	74	22	6	24.5	40	275	330	245	195	320	240		
X5	160	150	75	370	25	4	M14	55	16	59.6	91	30	8	33	45	356	420	300	260	415	310		
X6	200	180	90	420	30	4	M20	65	18	69.8	99	35	10	38	54	425	430	360	335	476	352		
X7	220	200	95	420	30	4	M20	80	22	85.8	110	40	12	43.5	65	460	470	370	380	529	390		
X8	250	230	100	480	35	4	M20	90	25	96	120	45	14	48.5	70	529	530	430	440	600	448		
X9	290	270	110	560	40	4	M24	100	28	107	140	50	14	53.5	80	619	620	510	560	722	552		
X10	325	300	120	630	40	4	M30	110	28	117	150	55	16	59	100	706	690	580	600	813	612		
X11	420	380	140	800	50	6	M30	130	32	137	202	70	20	74.5	120	883	880	710	810	1065	809		
X12	540	480	160	1050	60	6	M42	180	45	190	330	90	25	95	150	1163	1160	990	1040	1462	1154		
B1	120	110	55	240	15	4	13	35	10	38.5	57	18	5	20	36	220	280	200	160	265	192		
B2	140	130	65	280	20	4	13	45	14	49	75	22	6	24.5	40	255	320	230	200	320	240		
B3	160	150	75	340	25	4	17	55	16	60	91	30	8	33	45	356	390	300	250	415	310		
B4	200	180	90	420	30	4	21	65	18	70	89	35	10	38.5	54	420	430	340	320	477	350		
B15	140	130	65	280	20	4	13	35	10	38.5	58	18	5	20	28	284	290	215	150	282	216		
B18	150	140	75	370	25	4	18	45	14	49	82	22	6	24.5	36	318	330	245	195	352	276		
B22	160	150	85	420	30	4	18	55	16	60	82	30	8	33	58	360	410	300	238	422	316		
B27	200	180	100	480	35	4	22	70	20	76	150	35	10	38.5	58	435	430	360	335	490	383		
B33	250	230	120	560	40	4	26	90	24	97	130	45	14	49	82	542	530	435	440	629	464		
B39	290	270	140	630	40	4	26	100	28	108	165	50	16	55	82	619	620	510	560	736	556		

按所配电机尺寸
Following the Dimensions of Motor Equipped

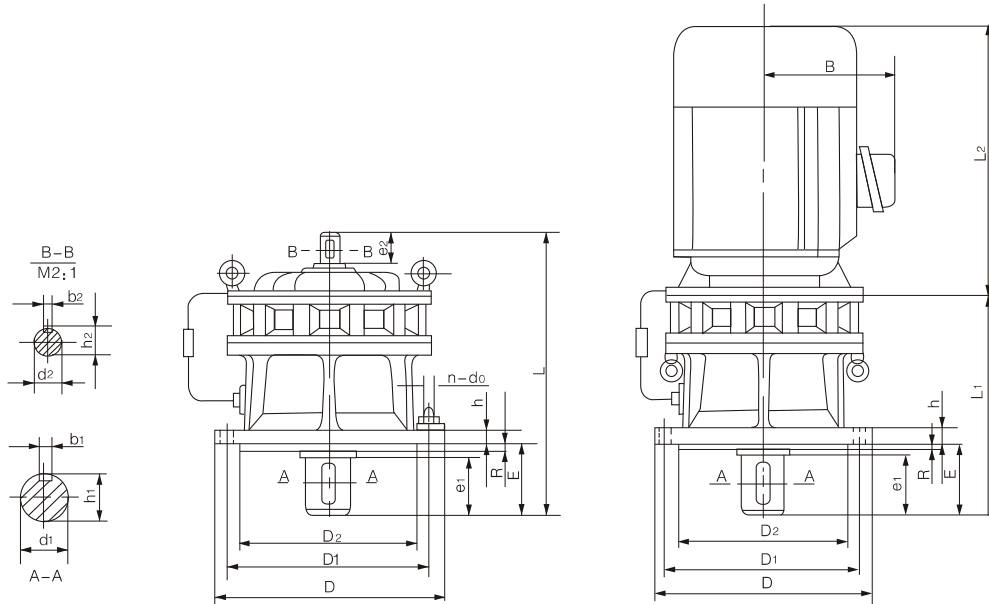
注: B、J系列同X系列 Note: B、J Series is same as X Series.
其使用条件说明如下: 1. “●” 可以使用电机的全容量, 但使用有制动力矩电机时, 由于制动力矩及制动力矩产生过负荷, 应选用“○”。
Operation Conditions: 2. “△” Means full motor capacity is available. But if brake motor is in use, △ shall be chosen, for frequently starting/stopping and brake torque can result in overload.
Means operation shall be limited within the torque (N·m) output shaft requires with safety device mounted on output shaft to avoid too much force moment exerting to reductor.

说明: “○”者为已生产的标准型产品; “x”者为不生产; 无标志处理选用。
Instruction: Models marked with “○” are standard products produced; models marked with “x” are not in production.





X



XLY (XL) 型单级减速机外型及安装尺寸
Appearance and Mounting Dimensions of XLY(XL) Single-stage Reductor

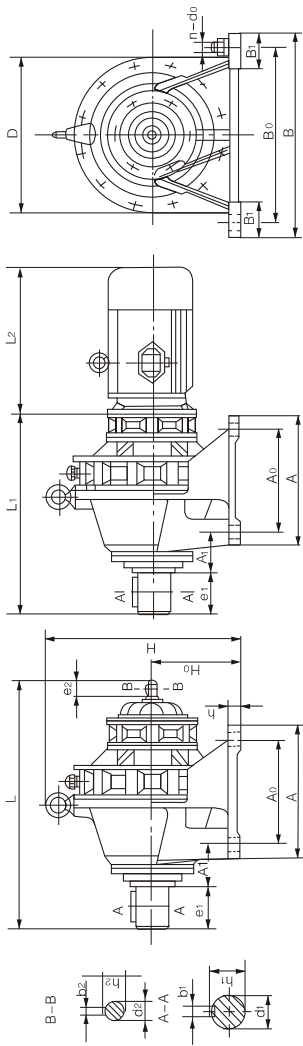
系列 机型号 Series and Model	安 装 尺 寸 Mounting Dimensions					轴 伸 联 接 尺 寸 Dimensions of Shaft End Joint								外 型 尺 寸 Dimensions						
	D ₁	D ₂	E	h	R	安 装 螺 钉 Foot Bolt		输 出 轴 Output Shaft				输 入 轴 Input Shaft				D	双 轴 型 Double- shaft Type			直 联 型 Flange Type
						n	d ₀	d ₁	b ₁	h ₁	e ₁	d ₂	b ₂	h ₂	e ₂		L	L ₁	L ₂	
X2	160	130	42	12	3	6	M8	25	8	28.2	34	15	5	17.1	25	180	212	159	按所配电机尺寸 Following the Dimensions of Motor Equipped	
X3	200	170	50	15	4	6	M10	35	10	38	45	18	6	20.5	35	230	267	192		
X4	230	200	78	15	4	6	M10	45	14	48.5	63	22	6	24.5	40	260	324	240		
X5	310	270	91	20	4	6	M10	55	16	59.6	79	30	8	33	45	340	417	310		
X6	360	316	92	22	5	8	M14	65	18	69.8	80	35	10	38	54	400	478	352		
X7	390	345	111	22	5	8	M16	80	22	85.8	98	40	12	43.4	65	430	532	390		
X8	450	400	111	30	6	12	M16	90	25	96	110	45	14	48.5	70	490	602	448		
X9	520	455	171	35	8	12	M20	100	28	107	129	50	14	53.5	80	580	723	552		
X10	590	520	173	40	10	12	M20	110	28	117	140	55	16	59	100	650	814	612		
X11	800	680	210	50	10	12	M36	130	32	137	184	70	20	74.5	120	880	1065	809		
X12	1020	900	370	60	10	8	M36	180	45	190	320	90	25	95	150	1160	1148	1166		
B1	200	170	52	15	4	6	M11	35	10	38.6	44	18	5	20	36	230	227	192		
B2	230	200	81	15	4	6	M11	45	14	49.1	63	22	6	24.2	40	260	336	240		
B3	310	270	90	20	4	6	M11	55	16	60.1	79	30	8	33	45	340	426	310		
B4	360	316	91	22	5	8	M15	65	18	70.6	80	35	10	38.5	54	400	486	350		
B15	200	170	65	16	4	6	M13	35	10	38	58	18	6	20.5	28	230	282	216		
B18	230	200	89	20	4	6	M13	45	14	48.5	82	22	6	24.5	36	260	352	276		
B22	310	270	89	22	4	6	M13	55	16	59	82	30	8	33	58	340	422	316		
B27	360	316	114	26	5	8	M18	70	20	74.5	105	35	10	38	58	400	490	383		
B33	450	400	140	30	6	12	M22	90	25	95	130	45	14	48.5	82	490	629	464		
B39	520	455	177	35	8	12	M22	100	28	106	165	50	14	53.5	82	580	736	556		

注: BJ系列同X系列
Note: BJ Series is same as X Series.



-表4-(Table 4)

双级X系列摆线针轮行星减速机型号规格 Model Specifications of Double-stage X Series Cycloid Pin Planetary Reductor
XWEY (XWE) 型双级减速机外型及安装尺寸 Appearance and Mounting Dimensions of XWEY(XWE)Double-stage Reductor



系列号 机型号 Series and Model	安装尺寸 Mounting Dimensions				轴伸联接尺寸 Dimensions of Shaft End Joint				外型尺寸 Dimensions													
	A ₁	A ₀	B ₁	B ₀	L	L ₁	L ₂	A ₀	A	B	D	L	L ₁	L ₂								
X32	140-0.5	96js15	100	55	250	20	4	M14	35m6	10	38	55	15js6	5	17	25	265	290	215	150	370	316
X42	150-0.5	95js15	145	65	290	22	4	M14	45m6	14	48.5	75	15js6	5	17	25	265	330	245	195	373	318
X43	150-0.5	95js15	145	65	290	22	4	M14	45m6	14	48.5	75	18js6	6	20.5	35	265	330	245	195	396	331
X63	160-0.5	115js15	150	75	370	25	4	M14	55m6	16	59.6	91	18js6	6	20.5	35	356	420	300	260	473	398
X63	200-0.5	36js15	275	75	380	30	4	M20	65m6	18	69.8	89	18js6	6	20.5	35	425	430	360	335	513	440
X64	200-0.5	36js15	275	75	380	30	4	M20	65m6	18	69.8	89	22js6	6	24.5	40	425	430	360	335	535	557
X74	220-0.5	35js15	320	95	420	30	4	M20	80m6	22	85.5	110	22js6	6	24.5	40	460	470	370	380	578	500
X84	250-0.5	35js15	380	120	480	35	4	M20	90m6	25	96	120	22js6	6	24.5	40	529	530	430	440	644	560
X85	250-0.5	35js15	380	120	480	35	4	M20	90m6	25	96	120	30js6	8	33	45	529	530	430	440	764	659
X95	290-0.5	45js15	480	120	560	40	4	M24	100m6	28	107	140	30js6	8	33	45	619	620	510	560	790	684
X106	325-0.5	80js15	500	120	630	40	4	M30	110m6	32	117	150	35k6	10	38	50	706	690	580	600	884	760
X117	420-0.5	122	330×2	140	800	50	6	M30	130m6	36	137	202	40k6	12	43	65	883	880	710	810	1106	968
B31	160-0.5	78	200	75	340	25	4	17	55	16	60	91	18	5	20	36	356	390	300	250	473	398
B41	200-0.5	94	260	75	380	25	4	21	65	18	70	89	18	5	20	36	420	430	340	320	513	440
B2215	160-0.5	113	150	75	370	25	4	18	55	16	56	82	18	6	20	28	360	410	300	238	473	407
B2715	200-0.5	35	270	80	380	30	4	22	70	20	74.5	105	18	6	20	28	435	430	360	335	540	470
B3322	250-0.5	35	380	85	480	35	4	26	90	25	95	130	30	8	33	58	542	530	435	440	706	601
B3922	290-0.5	35	480	90	560	40	4	26	100	28	106	165	30	8	33	58	619	620	510	560	796	691

注: BU系列同X系列
Note: BU Series is same as X Series.

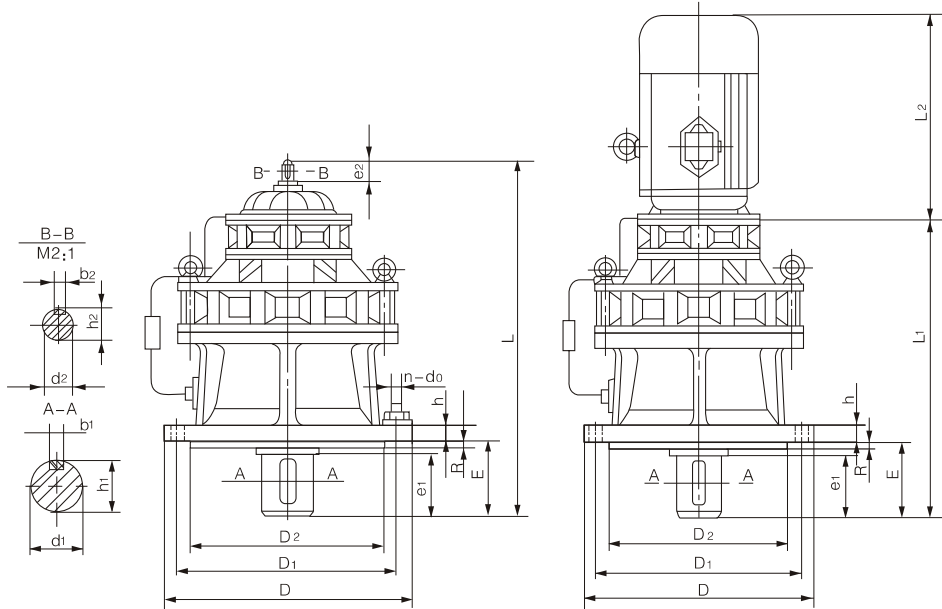
其使用条件说明如下: 1. "●" 可以使用电机的全容量。但使用有制动器电机时, 由于起、停止频繁及制动转矩产生过负荷, 应该选用 "○"。
Means full motor capacity is available. But if brake motor is in use, "○" shall be chosen, for frequently starting/stopping and brake torque can result in overload.

Operation Conditions: 2. "△" 应在输出轴许用扭矩 (N·m) 范围内使用, 使用时应在输出轴上安全装置, 以防止给减速机过大的力矩。
Means operation shall be limited within the torque (N·m) output shaft requires with safety device mounted on output shaft to avoid too much force moment exerting to reductor.

说明: "O" 者为已生产的标准型产品; "x" 者为不生产; 无标志处理选用。
Instruction: Models marked with "O" are standard products produced; models marked with "x" are not in production.



X



XLEY (XLE) 型双级减速机外型及安装尺寸
Appearance and Mounting Dimensions of XLEY(XLE)Double-stage Reductor

系列 机型号 Series and Model	安装尺寸 Mounting Dimensions					轴伸联接尺寸 Dimensions of Shaft End Joint										外型尺寸 Dimensions			
	D ₁	D ₂	E	h	R	安装螺钉 Foot Bolt		输出轴 Output Shaft		输入轴 Input Shaft		输入轴 Input Shaft		D	双轴型 Double- shaft Type			直联型 Flange Type	
						n	d ₀	d ₁	b ₁	h ₁	e ₁	d ₂	b ₂		h ₂	e ₂	L	L ₁	L ₂
X32	200	170h9	50	15	4	6	M10	35k6	10	28	45	15js6	5	17	25	230	372	316	
X42	230	200h9	79	15	4	6	M10	45k6	14	48	63	15js6	5	17	25	260	374	318	
X43	230	200h9	79	15	4	6	M10	45k6	14	48	63	18js6	6	20.5	35	260	397	331	
X53	310	270h9	91	20	4	6	M10	55m6	16	59.6	79	18js6	6	20.5	35	340	473	400	
X63	360	316h9	92	22	5	8	M14	65m6	18	69.8	80	18js6	6	20.5	35	400	513	442	
X64	360	316h9	92	22	5	8	M14	65m6	18	69.8	80	22js6	6	24.5	40	400	535	559	
X74	390	345h9	111	22	5	8	M16	80m6	22	85.8	98	22js6	6	24.5	40	430	578	502	
X84	450	400h9	111	30	6	12	M16	90m6	25	96	110	22js6	6	24.5	40	490	644	560	
X85	450	400h9	111	30	6	12	M16	90m6	25	96	110	30js6	8	33	45	490	692	587	
X95	520	455h9	171	35	8	12	M20	100m6	28	107	129	30js6	8	33	45	580	790	688	
X106	590	520h9	173	40	10	12	M20	110m6	28	117	140	35k6	10	38	50	650	884	760	
X117	800	680	210	50	10	12	M36	130m6	32	137	184	40k6	12	43	65	880	1106	968	
B31	310	270	90	20	4	6	M11	55	16	60	79	18	5	20	36	340	473	400	
B41	360	316	91	22	5	8	M16	65	18	70.6	80	18	5	20	36	400	531	442	
B2215	310	270	89	22	4	6	M13	55	16	59	82	18	6	20.5	28	340	473	407	
B2715	360	316	114	26	5	8	M13	70	20	74.5	105	18	6	20.5	38	400	540	474	
B3322	450	400	140	30	6	12	M22	90	25	95	130	30	8	33	58	495	706	601	
B3922	520	455	177	35	8	12	M22	100	28	106	165	30	8	33	58	580	796	691	

按所配电机尺寸
Following the Dimensions of Motor Equipped

注: BJ系列同X系列
Notes: BJ Series is same as X Series.